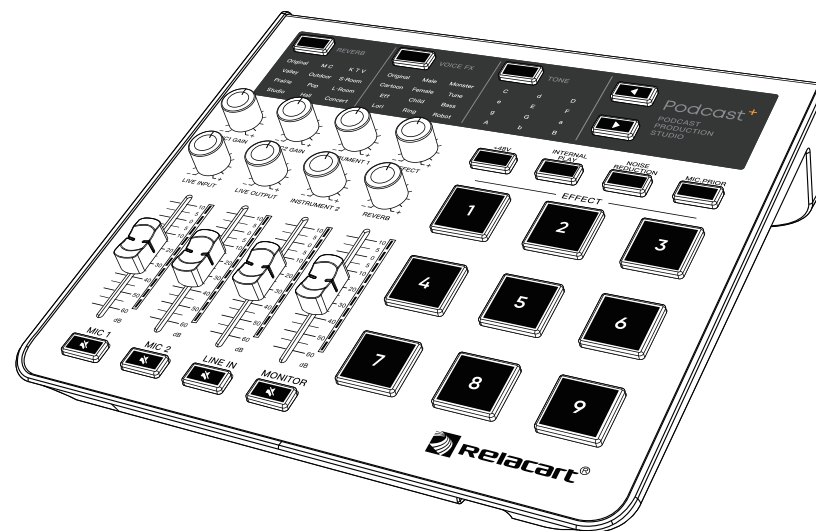


Podcast+ | PODCAST PRODUCTION STUDIO

播客制作录音室



100% recycled paper
100% papier recyclé



www.relacart.com

使用说明书
Installation and Operation

Contents 目录

Introduction	2
Product Introduction	2
Podcast ⁺ Introduction	2
Podcast ⁺ Function	2
Packaging List	3
Product panel introduction	4
Front panel	4
Rear panel	6
Quick Start Guide	7
1 Connecting your microphone	7
2 Connecting your musical instrument	8
3 Connecting your line output device	9
4 Connecting your monitor speakers	10
5 Connecting your phone with a cable	11
6 Connecting your computer with a cable	12
Specification	13
Precautions	14

引言	17
产品简介	17
Podcast ⁺ (播家) 简介	17
Podcast ⁺ (播家) 功能	17
包装清单	18
产品面板介绍	19
前面板	19
后面板	21
快速入门指南	22
1 连接您的麦克风	22
2 连接您的乐器	23
3 连接您的线路输出设备	24
4 连接您的监听扬声器	25
5 通过数据线连接您的手机	26
6 通过数据线连接您的电脑	27
技术指标	28
注意事项	29

Introduction

Thank you for choosing RELACART podcast production studio sound cards, and welcome you to join our team of tens of thousands of professional users. Our professional design and production experience ensure the excellent performance of our products in terms of quality, performance and stability.

Product Introduction

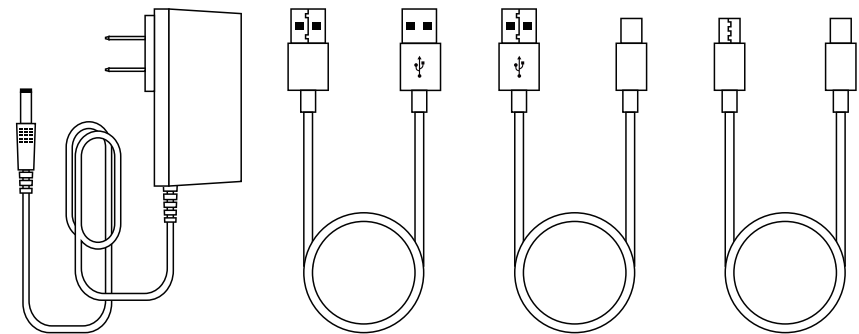
Podcast+ is a podcast production studio specially designed for live streaming app, which collects the live application functions such as mixing, sound effects, and effects. Can connect 4 mobile phones or PC at the same time to transmit to live broadcast equipment through digital audio. Its design is light and easy to carry, the panel layout is simple, and the function distinction is clear and easy to understand. 4 TYPE-C ports provide charging function, which can realize charging while broadcasting, eliminating the trouble of live broadcast battery life. Podcast+ is suitable for live broadcast, recording, Karaoke and other functions of mobile phones, tablets and PC, etc.

Functions include:

- 4 sliding faders, respectively adjust microphone 1/2, line in, monitor volume, and equipped with 4 mute buttons.
- 6 volume knobs, respectively adjust microphone 1/2 gain, live input/output volume, effect volume, and reverb volume.
- 9 large custom sound effects buttons, can change sound effects via USB.
- +48V phantom power switch, which can provide power to the microphone port for livestreaming condenser microphones.
- Internal play switch, when turned on, the 4 TYPE-C input audio does not return to the TYPE-C port, eliminating the echo problem.
- Noise reduction switch, when turned on, reduces the ambient noise picked up by the microphone.
- MIC.PRIOR switch, when there is audio input after the microphone is turned on, it will attenuate the audio of the accompaniment, instrument, and sound effect.
- Reverb switch, up to 12 kinds of preset reverb effects, suitable for a variety of scene applications.
- Voice FX switch, up to 12 kinds of voice changing effects, make the live streaming effect more abundant.
- Tone switch, with 12 built-in tones.

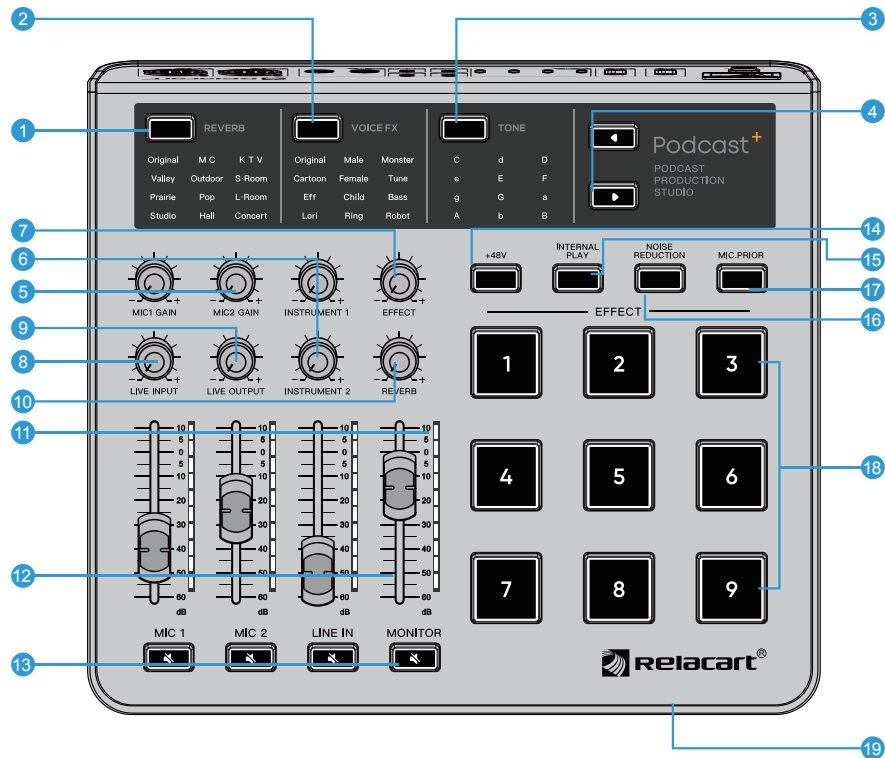
Packaging List

- Podcast+ sound card mixer
- Manual
- Power adapter
- USB A male + USB A male data cable
- USB A male + USB C data cable
- Dual Type-C data cable



Product panel introduction

Podcast⁺ Front panel



- ❶ 12 simulated live reverb effects.
- ❷ 12 kinds of voice changing effects.
- ❸ 12 kinds of analog electronic tone effects.

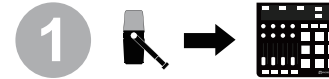
Note: 1. When any two function keys of “ REVEB ”, “ VOICE FX ” and “ TONE ” light on, you need to press the lighted function key again, and then press forward or backward to switch the effect.

2. Press and hold the function button for 3S to turn off the currently used function, and the indicator will turn off.

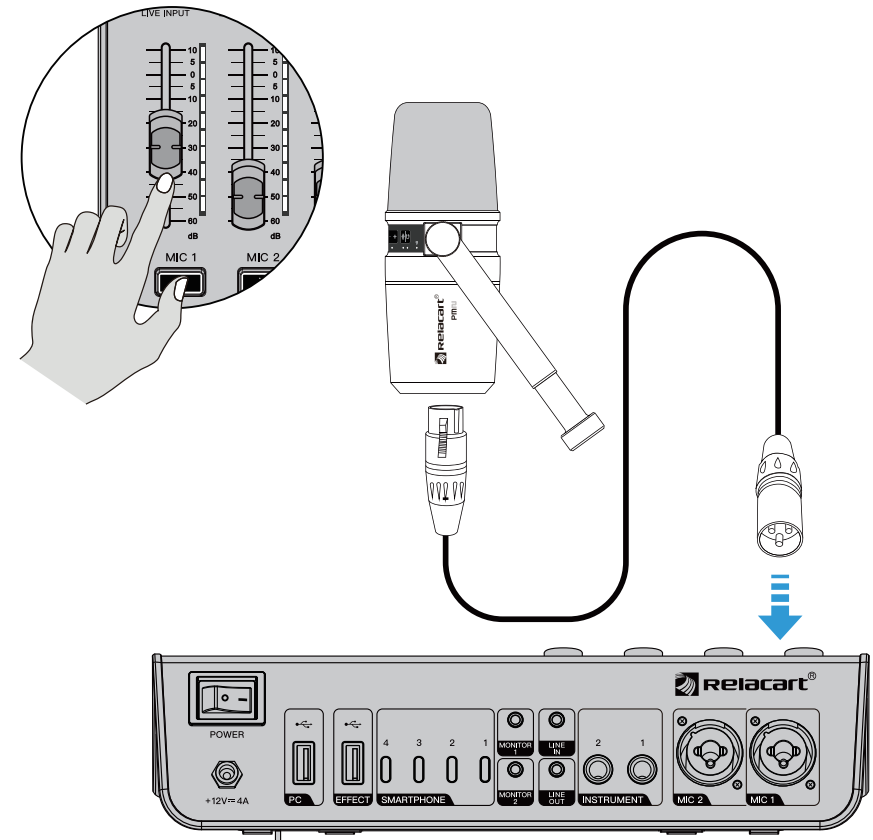
(* Two effects can be used at the same time, “ VOICE FX ” and “ TONE ” cannot be used at the same time)

- ❹ Control the forward or backward switching effect function button.
 - ❺ Independently control the gain of microphone 1 and the gain of microphone 2, and can amplify the gain of the front stage to adapt to various usage scenarios or microphones.
 - ❻ Independently control the input volume of Instrument 1 and Instrument 2.
 - ❼ Custom sound volume control.
 - ❽ Control the live input volume of TYPE-C.
 - ❾ Control the live output volume of TYPE-C.
 - ❿ Reverb effect volume control.
 - ⓫ Audio level indicator bar.
 - ⓬ Adjust the output volume faders of Mic 1, Mic 2, accompaniment and monitoring.
 - ⓭ Control the output volume mute button of microphone 1, microphone 2, accompaniment and monitoring.
 - ⓮ 48V phantom power switch: available for condenser microphones.
 - ⓯ Internal Play button: prevent echo phenomenon when using live broadcast.
 - ⓰ Noise Deduction button: Effectively reduce complex environmental noise.
 - ⓱ MIC.PRIOR button: Audio for accompaniment, instruments, C-style performances, and voice input is attenuated during voice input. When there is no audio input from the microphone, it returns to the original volume.
 - ⓲ 9 types of customized effect buttons.
- Note: Replace the produced effect file with the factory effect file (the name of the file needs to be changed to: 00001 — 00009), otherwise the effect file will not be recognized; the total memory of the sound effect file is 32M, and supports MP3 and WAV audio formats.
- ⓳ 3.5 mm TRS main headphone output connection.

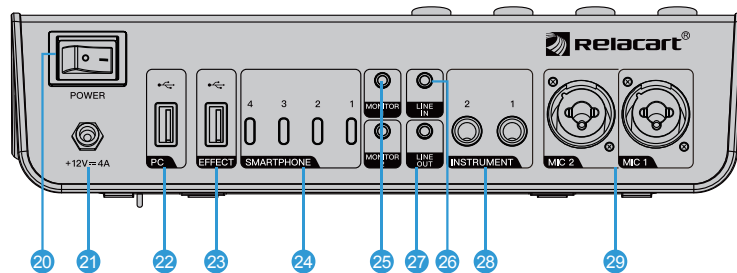
Quick Start Guide



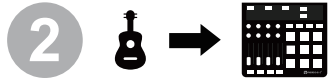
Connecting your microphone



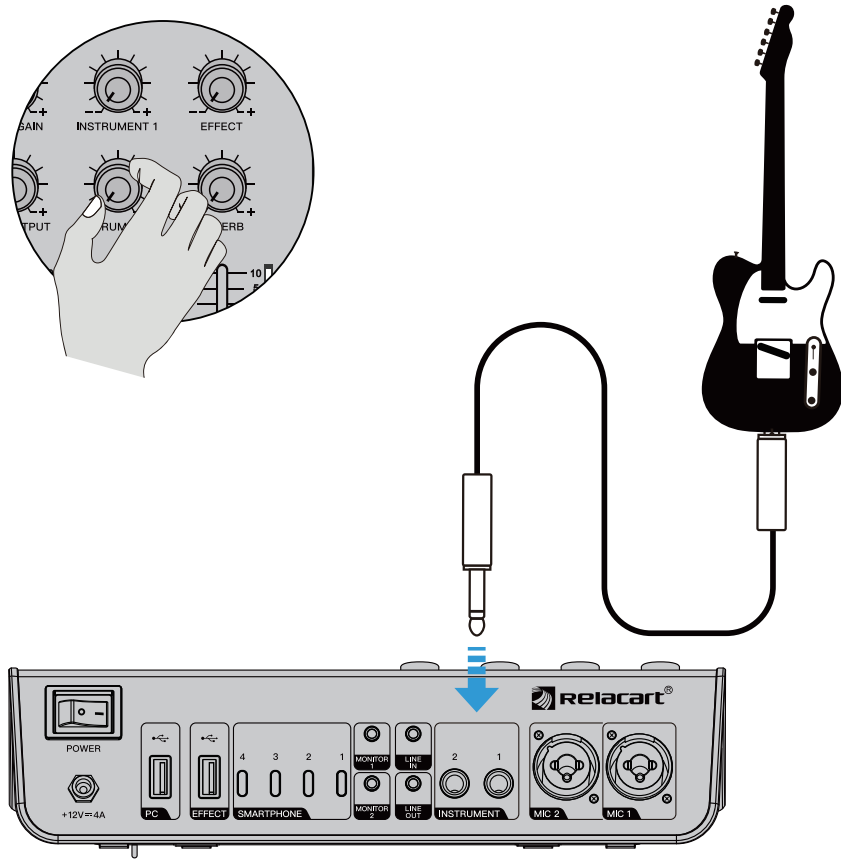
Podcast+ Rear panel



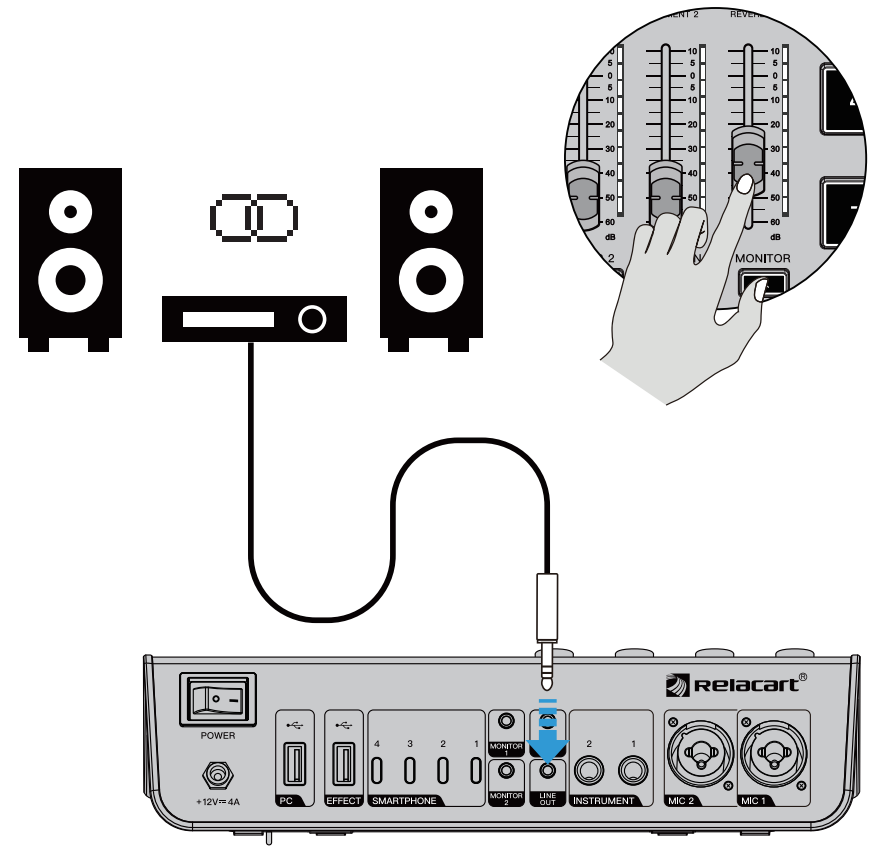
- 20 Power toggle switch (I / O) .
- 21 DC power input jack.
- 22 USB-A connection for computer data communication, remote upgrade and other functions.
- 23 USB-A connection for changing your own custom live sound effects.
- 24 It can be easily connected to mobile phones, computers or live broadcast equipment through TYPE-C cable, and provides charging function.
- 25 3.5 mm TRS headphone output connection.
- 26 3.5 mm TRS stereo accompaniment input connection.
- 27 3.5 mm TRS Stereo line out connection.
- 28 Inputs for connecting to musical instruments.
- 29 Two XLR (6.3 mm socket) combo mic inputs with phantom power.



Connecting your musical instrument

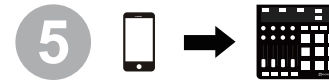
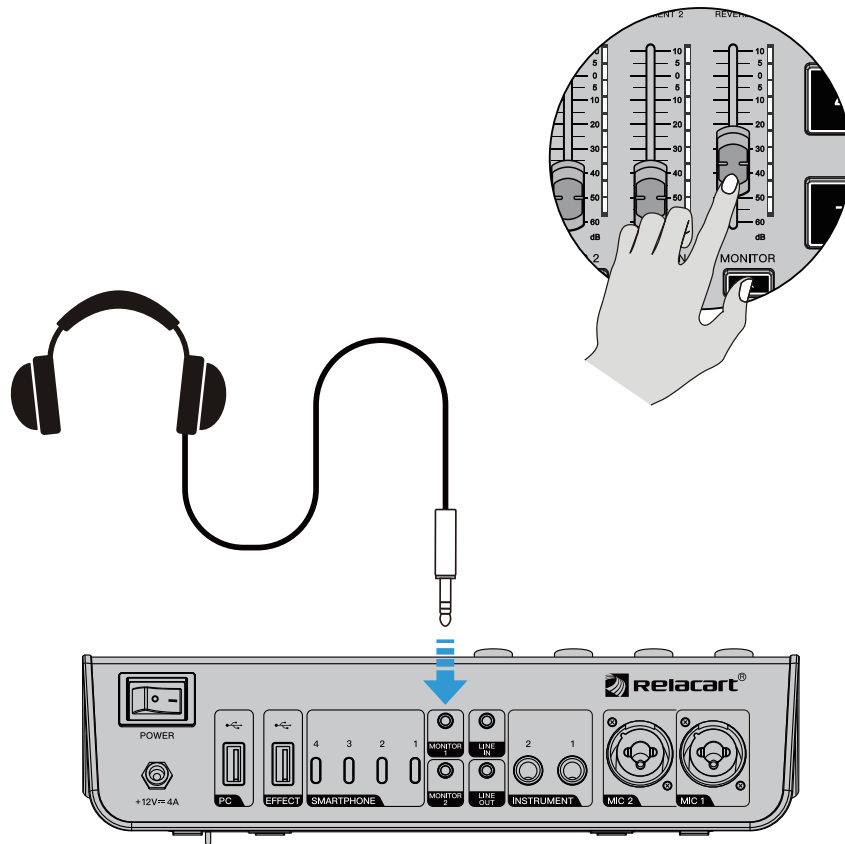


Connecting your line output device

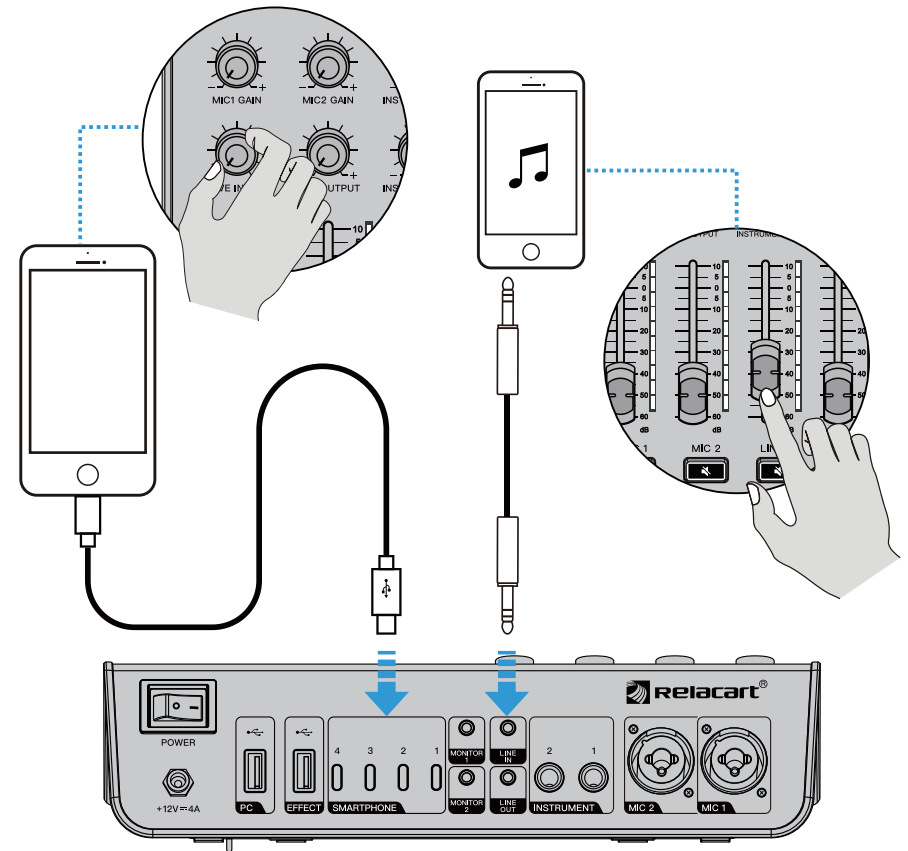




Connecting your monitor speakers



Connecting your phone with a cable

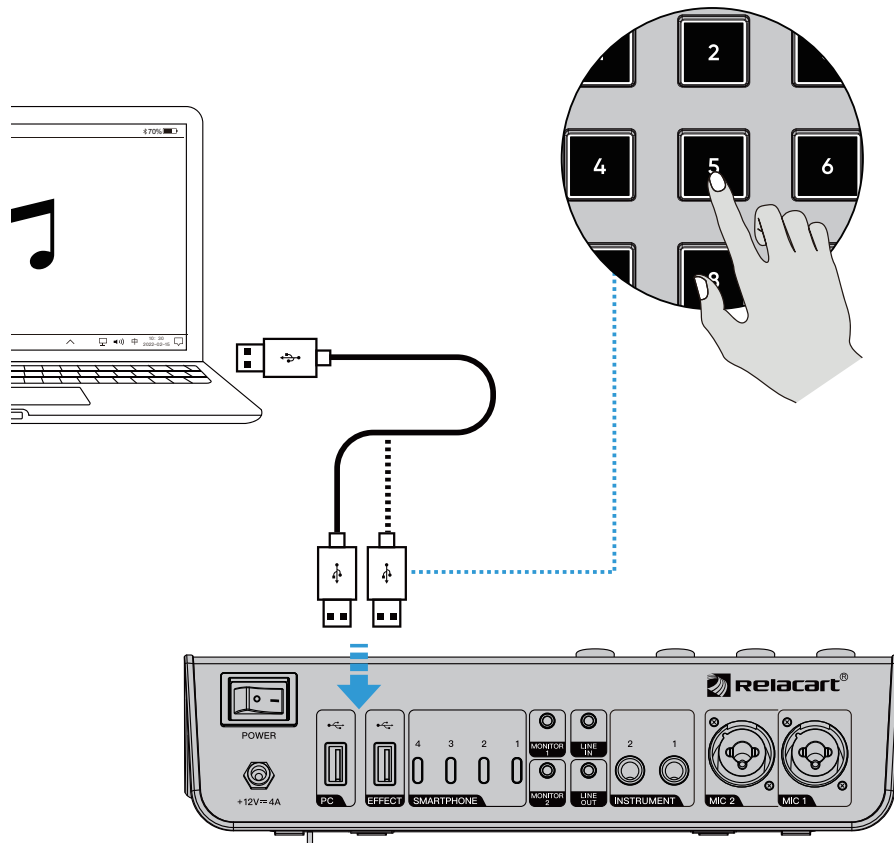


Specification

Sample Rates	24 - bit, 48 KHz
Frequency Response	20 Hz to 20 KHz +0 / -1 dB
System Delay	1.5 ms
T.H.D	< 0.05 %
Input Crosstalk	< -120 dB @ 1 KHz (Adjacent Channels)
S/N Ratio	90 dB single channel - fader max (A-weighted)
Dynamic Range	100 dB single channel - fader max (A-weighted)
Common Mode Rejection Ratio	>70 dB @ 1 KHz
Input Impedance	3.3 K Ω (XLR Balance) ; 30 K Ω (1/4")
Gain	0 to 60 dB (XLR) ; -20 to 40 dB (1/4")
Output Impedance	600 Ω
Power Supply	DC 12 V (4 A)
Dimensions (mm)	260 (L) x 230 (H) x 89 (D)
Weight	\approx 1.45 Kg



Connecting your computer with a cable



PRECAUTIONS

Please read carefully before proceeding

Please keep this manual in a safe place for future refer - ence.

WARNING

Always follow the basic precautions listed below to avoid the possibility of serious injury or even death from electrical shock, short-circuiting, damages, fire or other hazards. These precautions include, but are not limited to, the following:

Power supply/Power cord

- Only use the voltage specified as correct for the device. The required voltage is printed on the name plate of the device.
- Use only the power cord provided.
- Do not place the power cord near heat sources such as heaters or radiators, and do not excessively bend or otherwise damage the cord, place heavy objects on it, or place it in a position where anyone could walk on, trip over or roll anything over it.
- Please be sure to connect to an appropriate power outlet with a protective grounding connection. Improper grounding may cause electric shock.

Do not open

- Do not open the device or attempt to disassemble the internal parts or modify them in any way. This device contains no user - serviceable parts, If it should appear to be malfunctioning, discontinue use immediately.

Warning about humidity

- Do not expose the device to rain, use it near water or in damp or wet conditions, or place on it any containers (such as vases, bottles or glasses) containing liquids which might spill into any openings.
- Never insert or remove an electric plug with wet hands.

If you notice any abnormality

- If the power cord is frayed or damaged, there is a sudden loss of sound during use of the device or it emits unusual smells or smoke, please turn off the power switch immediately.
- If this device should be dropped or damaged, immediately turn the power off, disconnect the electric plug from the outlet.

CAUTION

Always follow the basic precautions listed below to avoid the possibility of physical injury to you or others, or damage to the device or other property. These pre - cautions include, but are not limited to, the following:

Power supply/Power cord

- Remove the electric plug from the outlet when the device is not to be used for extended periods of time, or during electrical storms.
- When removing the electric plug from the device or an outlet, always hold the plug itself and not the cord. Pulling by the cord can damage it.

Placement location

- Before moving the device, remove all connected cables.
- When setting up the device, make sure that the AC outlet you are using is easily accessible. If some trouble or malfunction occurs, immediately turn the power off and disconnect the plug from the outlet.
- If the device is installed in EIA standard brackets, keep the back of the brackets open and keep the device at least 10cm away from a wall or surface. In addition, if the equipment is installed together with power amplifiers and other equipment that generally generate heat, please make sure that there is enough space between the equipment and the equipment that generates heat, or install ventilation panels to place the equipment inside to achieve high temperature.
- Poor ventilation can lead to overheating and can damage equipment or even cause a fire.
- Avoid setting all equalizer and level knobs to their maximum. Depending on the condition of the connected devices, doing so may cause feedback and may damage the speakers.
- Do not expose the device to excessive dust or vibration, or extreme cold or heat (such as in direct sunlight, near a heater, or in a car during the day), in order to prevent the possibility of panel disfiguration or damage to the internal components.
- Do not place the device in an unstable position where it might accidentally fall over.
- Do not block the ventilation holes. This device has ventilation holes on the front and back to prevent excessive temperature inside the device. Be especially careful not to place the device on its side or upside down. Poor ventilation can cause overheating and can damage equipment settings and cause fires.

Connections

- Before connecting the device to other devices, turn off the power for all devices. Before turning the power on or off for all devices, set all volume levels to minimum.
- When connecting the speaker to the speaker jack, use the speaker cable. Using other kinds of cables can cause fires.

Handling caution

- Do not use the device in the vicinity of a TV, radio, stereo equipment, mobile phone, or other electric devices. Otherwise, the device, TV, or radio may generate noise.
- When turning on the AC power in your audio system, always turn on the device FIRST, to avoid speaker damage. When turning the power off, the device should be turned off FIRST for the same reason.
- Do not insert fingers or hands into any gaps or openings (vents, etc.) of the device.
- Avoid inserting or dropping foreign objects (paper, plastic, metal, etc.) into any gaps or openings (vents, etc.) on the device. If this happens, turn off the power immediately and unplug the power cord from the DC/AC outlet.
- Do not use speakers or headphones for a long period of time at a high or uncomfortable volume level, since this can cause permanent hearing loss. If you experience any hearing loss or ringing in the ears, consult a physician.
- Do not rest your weight on the device or place heavy objects on it, and avoid use excessive force on the buttons, switches or connectors.
- When cleaning the device, use a dry and soft cloth. Do not use paint thinners, solvents, cleaning fluids, or chemical - impregnated wiping cloths.

引言

感谢您选用 RELACART 力卡播客制作录音室声卡，并欢迎您加入我们数以万计的专业用户队伍。我们的专业设计和生产经验确保了我们的产品质量，性能及稳定性等各方面的优良表现。

产品介绍

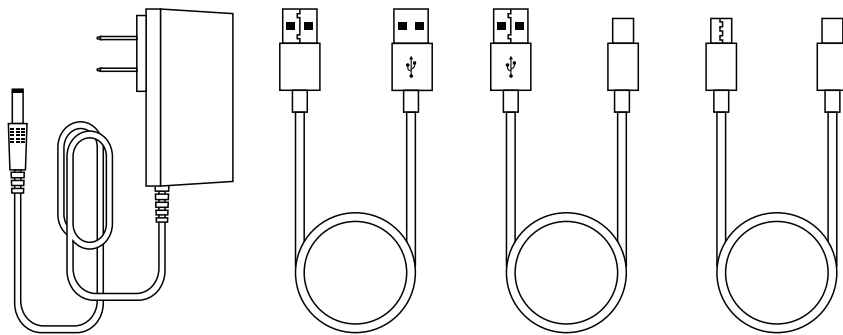
Podcast⁺ (播家) 是一款专门为直播平台设计的声卡调音台。集合了混音、音效、效果等直播的应用功能。可以同时连接 4 台手机或电脑通过数字音频传输到直播设备。播家设计轻便易携，面板布局简洁，功能区分清晰通俗易懂。4 个 TYPE-C 接口提供充电功能，实现边播边充，免去直播续航的烦恼。播家适用于手机、平板、电脑等设备的直播、录音、K歌等功能。

功能包括：

- 4 个滑动推子，分别调节话筒 1/2、伴奏、监听音量，并配备 4 个静音按键。
- 6 个音量旋钮，分别调节话筒 1/2 增益、直播输入/输出音量、音效音量、混响音量。
- 9 个超大自定义音效按键，可通过 USB 更换音效。
- +48V 幻象电源开关，可为话筒端口提供电源，供直播电容话筒使用。
- 内放开关，开启后 4 个 TYPE-C 的输入音频不返回 TYPE-C 端口，消除回声问题。
- 降噪开关，开启后降低话筒拾取的环境噪声。
- 闪避开关，当话筒开启后有音频输入时，会将伴奏、乐器、音效的音频衰减。
- 混响，多达 12 种混响预设效果，适合多种场景应用。
- 变音，多达 12 种变音效果，使直播效果更加丰富。
- 变调，内置 12 种音调。

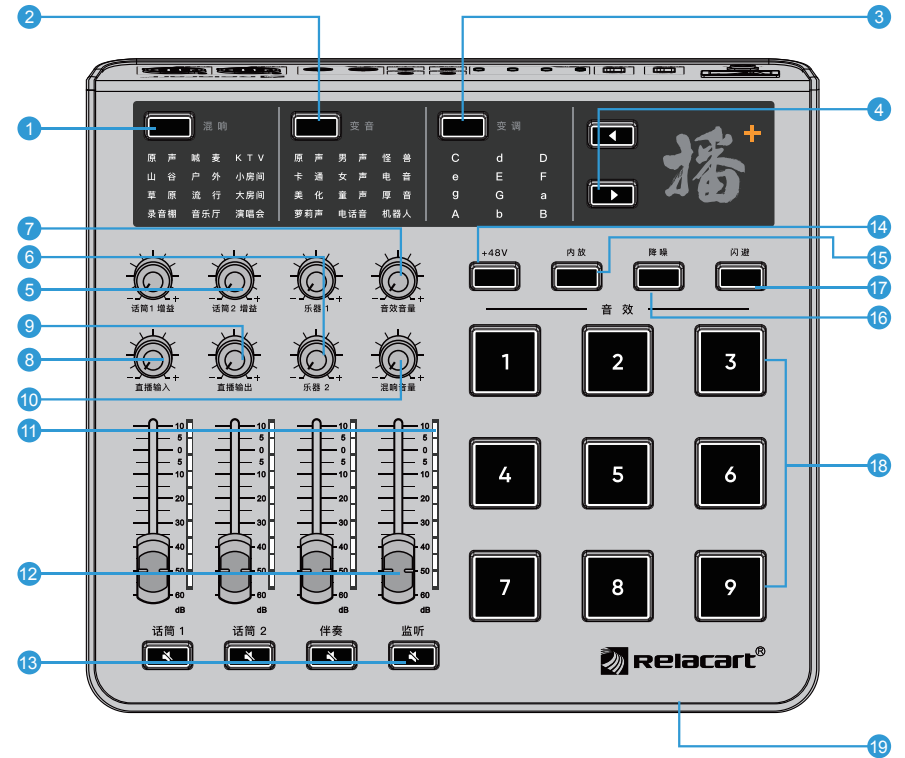
包装清单

- Podcast+ (播家) 声卡调音台
- 说明书
- 合格证
- 保修卡
- 电源适配器
- USB A 公+USB A 公 数据线
- USB A 公+USB C 数据线
- 双 Type-C 数据线



产品面板介绍

Podcast+ (播家) 前面板



- ① 12 种模拟现场混响效果
- ② 12 种模拟人声变音效果
- ③ 12 种模拟电音变调效果

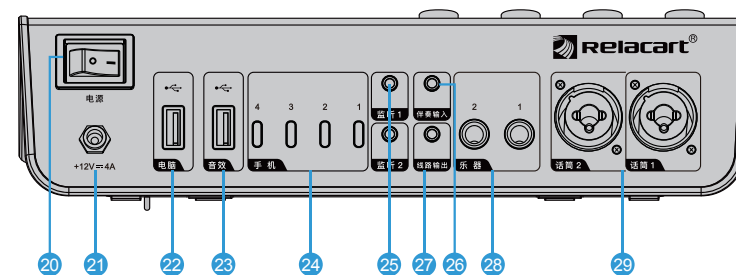
注：1、当混响、变音、变调任意两个功能按键指示灯亮起时，需重新按下亮起的功能按键后，再按前进或后退切换效果。

2、长按功能按键 3 秒关闭当前使用的功能后指示灯熄灭。

(* 同时可使用两种效果，变音与变调不可同时使用)

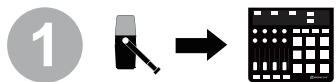
- ④ 控制前进或后退的切换效果功能按键
- ⑤ 独立控制话筒1 增益、话筒2 增益音量，可将前级增益放大，以适应各种使用场景或话筒
- ⑥ 独立控制乐器1、乐器2 的输入音量
- ⑦ 自定义音效音量控制
- ⑧ 控制 TYPE-C 的直播输入音量
- ⑨ 控制 TYPE-C 的直播输出音量
- ⑩ 混响效果音量控制
- ⑪ 音频电平指示灯条
- ⑫ 调节话筒1、话筒2、伴奏、监听的输出音量推子
- ⑬ 控制话筒1、话筒2、伴奏、监听的输出音量静音按键
- ⑭ 48V幻象电源开关：可供电容话筒使用
- ⑮ 内放按键：防止直播使用时出现回声现象
- ⑯ 降噪按键：有效降底复杂的环境噪声
- ⑰ 闪避按键：话筒音频输入时，伴奏、乐器、TYPE-C 和音效输入的音频会衰减；话筒音频无输入时，恢复至原来的音量。
- ⑱ 9 种自定义音效按键
注意：将已制作好的音效文件替换成出厂的音效文件（文件的名称需修改为：00001—00009），否则识别不了音效文件；音效文件总内存 32M，支持 MP3、WAV 音频格式。
- ⑲ 3.5 mm TRS 主耳机输出连接

Podcast⁺ (播家) 前面板

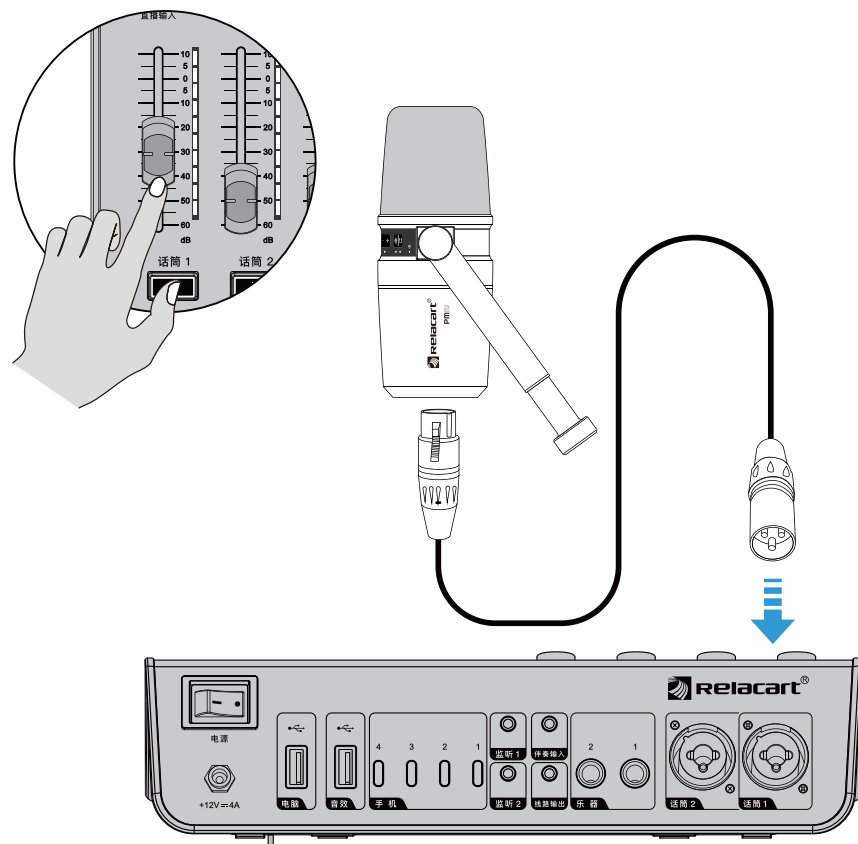


- ⑳ 电源拨动开关 (I / O)
- ㉑ 直流电源输入插口
- ㉒ 用于电脑数据通信、远程升级等功能的 USB-A 连接
- ㉓ 用于更换您自定义专属直播音效的 USB-A 连接
- ㉔ 可通过 TYPE-C 线轻松连接至手机、电脑或直播设备等，并提供充电功能
- ㉕ 3.5 mm TRS 耳机输出连接
- ㉖ 3.5 mm TRS 立体声伴奏输入连接
- ㉗ 3.5 mm TRS 立体声线路输出连接
- ㉘ 用于连接至乐器设备输入
- ㉙ 带有幻象电源的两个 XLR (6.3 mm 插座) 组合式的话筒输入

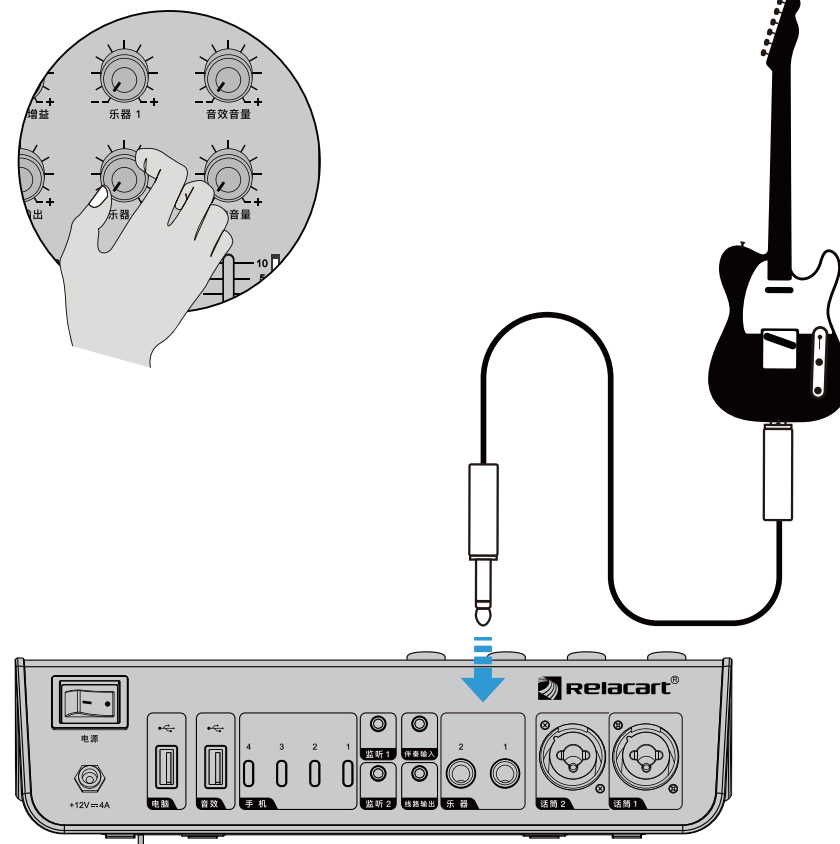
快速入门指南



连接您的麦克风

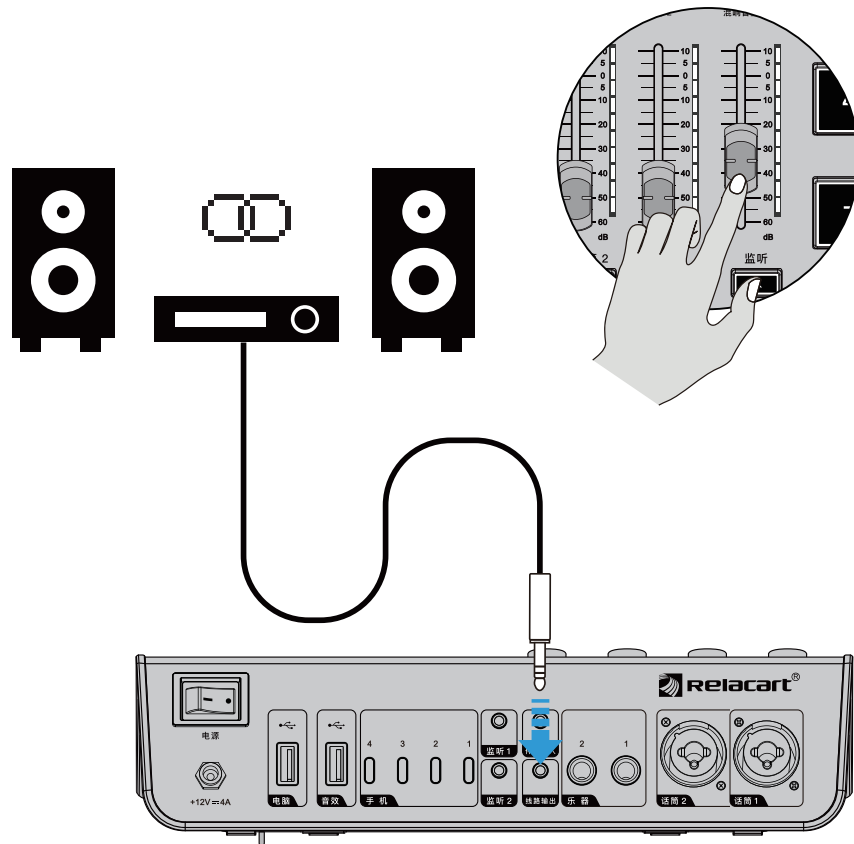


连接您的乐器

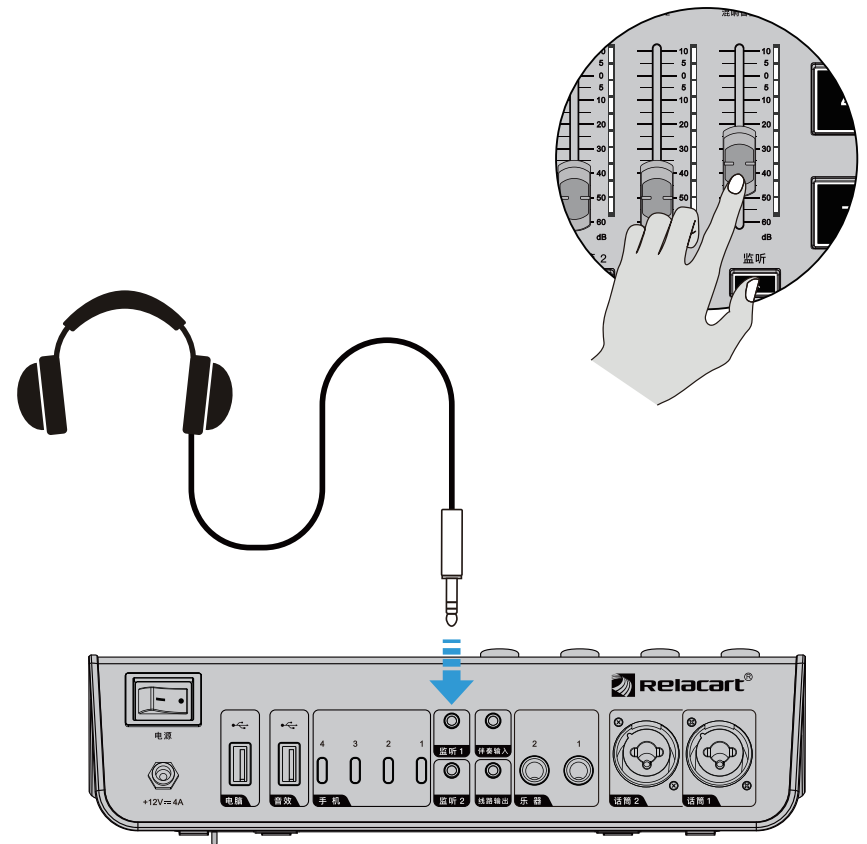




连接您的线路输出设备

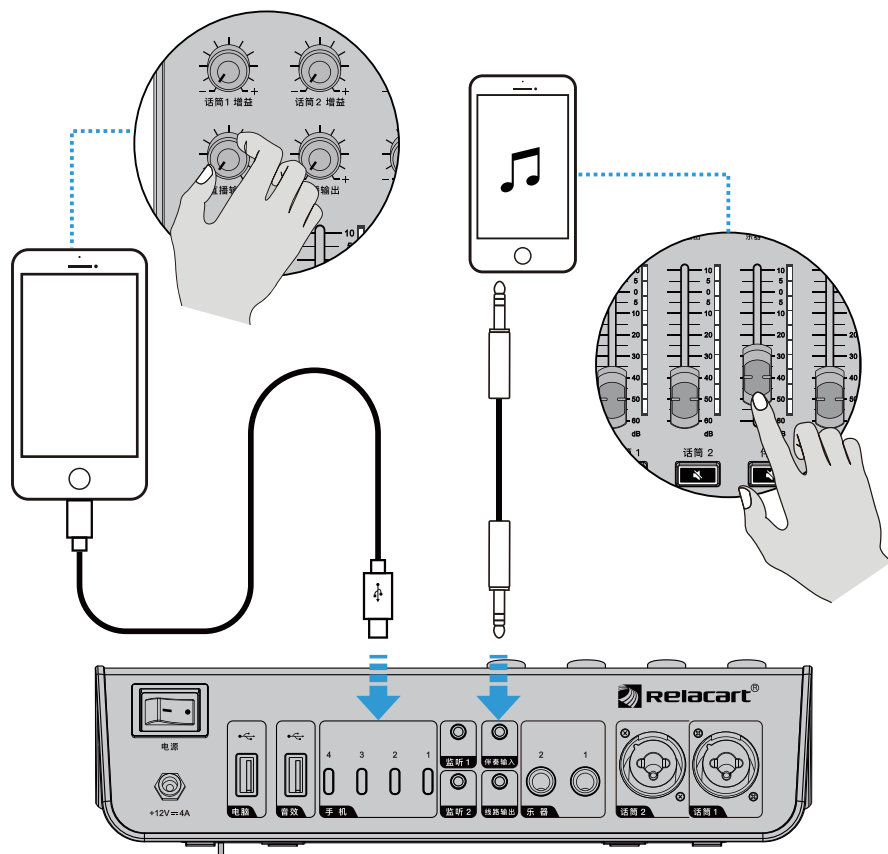


连接您的监听扬声器

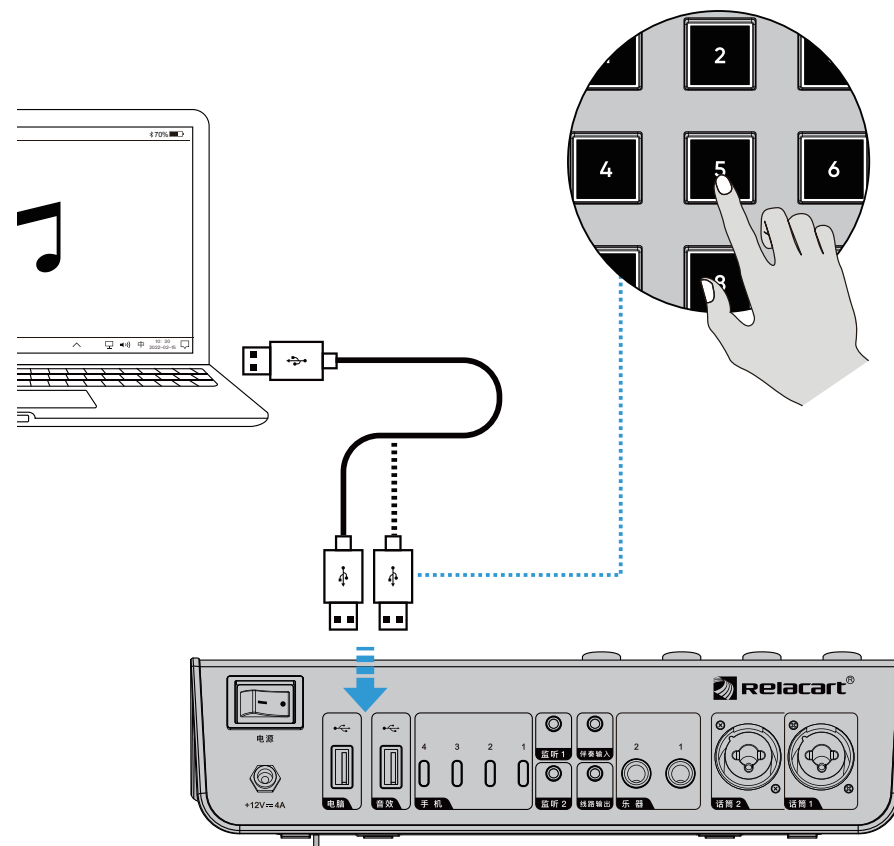




通过数据线连接您的手机



通过数据线连接您的电脑



技术指标

采样率	24 - bit, 48 KHz
频率响应	20 Hz 至 20 KHz +0/-1 dB
系统延时	1.5 ms
总谐波失真	<0.05%
输入串扰	< -120 dB @ 1 KHz (相邻通道)
信噪比	90 dB 单通道-推子最大 (A加权)
动态范围	100 dB 单通道-推子最大 (A加权)
共模抑制比	>70 dB @ 1 KHz
输入阻抗	3.3 K Ω (XLR 平衡); 30 K Ω (1/4")
增益	0 至 60 dB (XLR); -20 至 40 dB (1/4")
输出阻抗	600 Ω
电源	DC 12V (4A)
尺寸 (mm)	260 (L) x 230 (H) x 89 (D)
重量	\approx 1.45 Kg

注意事项

请在操作使用前，首先仔细阅读下述内容
 请将本说明书存放在安全的地方，以便将来随时参阅。

警告

为了避免因触电、短路、损伤、火灾或其它危险可能导致的严重受伤甚至死亡，请务必遵守下列基本注意事项。这些注意事项包括但不限于下列情况：

电源/电源线

- 只能使用本设备所规定的额定电压。所要求的电压被印在本设备的铭牌上。
- 只能使用提供的电源线。
- 请勿将电源线放置在热源如加热器或散热器附近，不要过分弯折或损伤电源线，不要在其上加压重物，不要将其放置在可能被踩踏引起绊倒或可能被碾压的地方。
- 请务必连接到带有保护接地连接的适当电源插座。接地不当可能引起触电。

请勿打开

- 请勿打开本设备或试图拆卸其内部零件或进行任何方式的改造。本设备不含任何用户可自行修理的零件，若出现异常，请立即停止使用。

关于潮湿的警告

- 请勿让本设备淋雨或在水附近及潮湿环境中使用，或将盛有液体的容器放在其上（如花瓶、瓶子或玻璃杯），否则可能会导致液体溅入任何开口。
- 切勿用湿手插拔电源线插头。

意识到任何异常情况时

- 若电源线出现磨损或损坏，使用设备过程中声音突然中断或因此而发生异常气味或冒烟，请立即关闭电源开关。
- 若本设备发生摔落或损坏，请立即关闭电源开关，从电源插座中拔出电源线插头。

小心

为了避免您或周围他人可能发生的人身伤害、设备或财产损失，请务必遵守下列基本注意事项。这些注意事项包括但不限于下列情况：

电源/电源线

- 当准备长期不使用本设备或发生雷电时，请从电源插座中拔出电源线插头。
- 当从本设备或电源插座中拔出电源线插头时，请务必抓住插头而不是电源线。直接拽拉电源线可能会导致损坏。

放置位置

- 移动设备之前，请务必拔出所有已连接的连接电缆。
- 设置设备时，请确认要使用的交流电源插座伸手可及。如果发生问题或故障，请立即断开电源开关并从电源插座中拔出插头。
- 若将本设备安装在 EIA 标准托架中，请使托架背面保持打开，并保证设备距离与墙壁或表面至少 10cm。另外，若将本设备与功率放大器等一般会产生热量的设备一起安装，请务必使本设备与产生热量的设备之间有足够的空间，或者安装通风面板放置本设备内部达到高温。
- 通风不畅可能导致过热，并可能损坏设备，甚至引起火灾。
- 请勿将任何均衡器和衰减器设定在最大位置。否则，根据所连接设备的具体状态，可能会导致反馈而损坏音箱。
- 为了避免操作面板发生变形或损坏内部组件，请勿将本设备放在有大量灰尘、震动、极端寒冷或炎热（如阳光直射、靠近加热器或烈日下的汽车内）的环境中。
- 请勿将本设备放在不稳定的地方，否则可能会导致突然翻倒。
- 请勿堵塞通风孔。本设备在正面和背面都有通风孔，用以防止设备内部温度过高。特别要注意不要侧面或上下颠倒放置本设备。通风不畅可能会导致过热，并可能损坏设备设置引起火灾。

连接

- 将本设备连接到其它设备之前，请关闭所有设备的电源开关。在打开或关闭所有设备的电源开关之前，请将所有音量都调到最小。
- 将音箱连接到音箱插口时，请使用音箱电缆。使用其它种类的电缆可能会导致火灾。

小心操作

- 请勿在电视、收音机、立体声设备、手机或其他电子设备附近使用本设备。这可能会在设备本身以及靠近设备的电视机或收音机中引起噪音。
- 打开音频系统的交流电源时，请始终最先打开本设备，以避免损坏音箱。同样，关闭电源时，请始终最后关闭本设备。
- 请勿将手指或手插入本设备的任何间隙或开口（通风口等）。
- 请避免在设备上的任何间隙或开口（通风口等）插入或落进异物（纸张、塑料、金属等）。如果发生这种情况，请立即关闭电源开关，然后从 DC/AC 电源插座中拔出电源插头。
- 请勿长时间持续在很高或不舒服的音量水平使用本设备或耳机，否则可能会造成永久性听力损害。如果遇到失聪或耳鸣的情况，请寻求医治。
- 请勿将身体压在本设备上或在其上放置重物，操作按钮、开关或插口时要避免过分用力。
- 清洁设备时，使用柔软的干布。请勿使用涂料稀释剂、溶剂、清洁液或浸了化学物质的抹布。