

DENON®

DHT-S716H

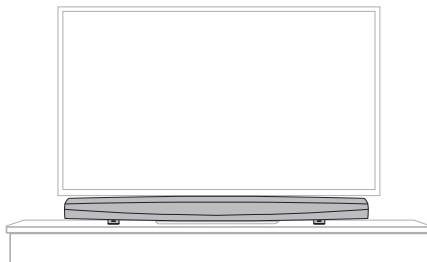
Wireless Full-Range Sound Bar

Quick Start Guide

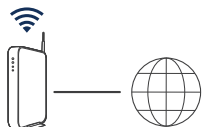


BEFORE YOU BEGIN

The DHT-S716H is designed to enhance the sound of your TV and allow you to enjoy HEOS Wireless Multi-Room Sound.



Make sure you have the following items in working order:



Wi-Fi Router
& Internet Connection



Apple iOS, Android or Kindle
mobile device connected to
your network



TV

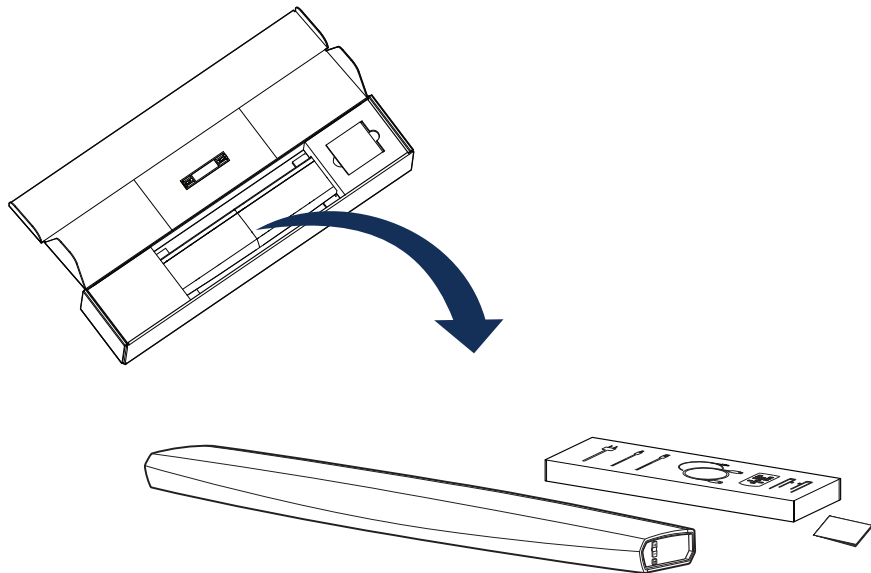
OPTIONAL

Two wireless HEOS surround speakers and a wireless HEOS Subwoofer.



STEP 1: UNPACK

Carefully unpack your DHT-S716H.



English

Français

Español

Deutsch

Nederlands

Italiano

Svenska

Dansk

Norsk

Русский

Polski

Common

STEP 1: UNPACK

Verify that the following items are included in the box.



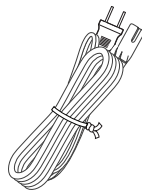
3.5 mm setup cable



HDMI cable



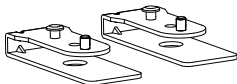
Optical cable



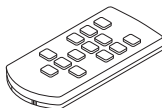
Power cord



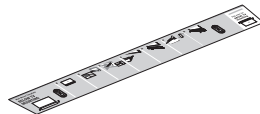
Ethernet cable



Riser feet



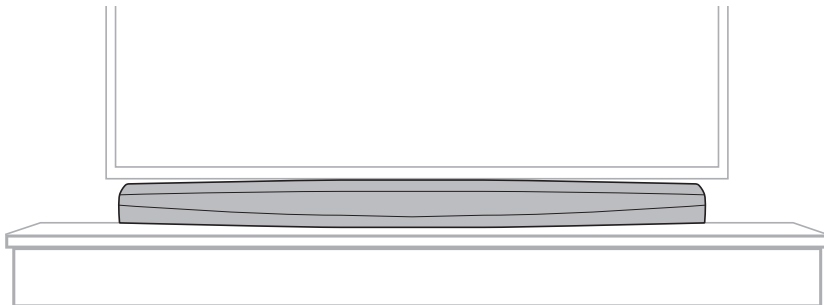
Remote control



Wall mount template

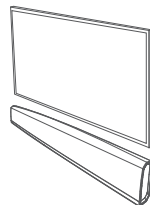
STEP 2: PLACE

Place the DHT-S716H at a convenient location near the TV.



OPTIONAL

The DHT-S716H can be wall-mounted using the integrated keyhole mounts. Please refer to the wall mount template located behind the DHT-S716H in the product carton.



English

Français

Español

Deutsch

Nederlands

Italiano

Svenska

Dansk

Norsk

Русский

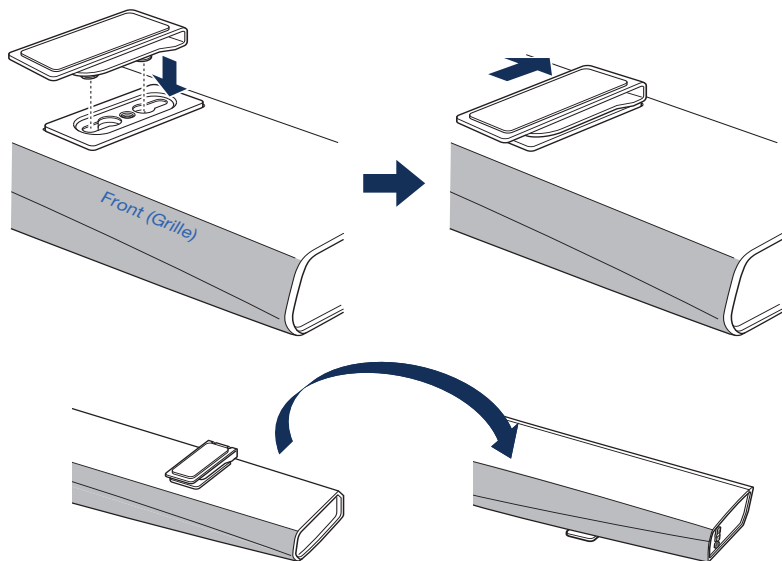
Polski

Common

STEP 2: PLACE

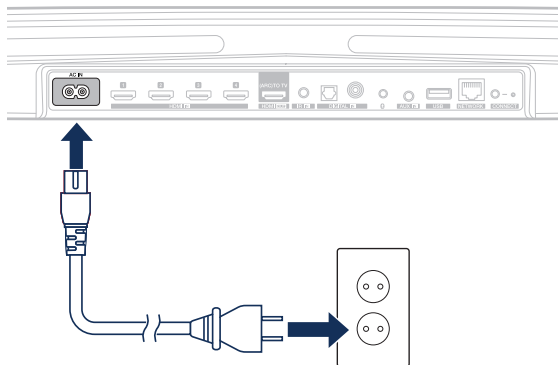
OPTIONAL

Attach the supplied riser feet if you need to raise the DHT-S716H over your TV stand base.



STEP 3: CONNECT

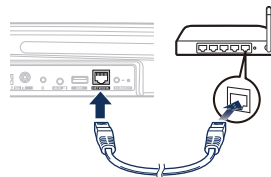
Connect the power cord between the DHT-S716H and a wall outlet.



OPTIONAL

If you are connecting the DHT-S716H to a wired network, connect the included Ethernet cable between the DHT-S716H and your router.

Do not connect the Ethernet cable if you are connecting your DHT-S716H to a wireless network.



STEP 4: CONTROL

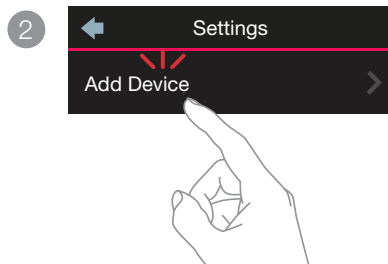
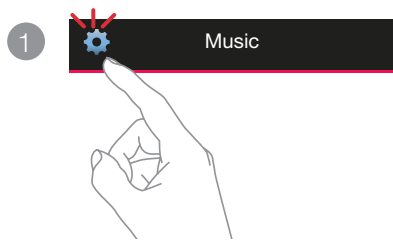
- 1 Download the HEOS App.
Go to the App Store, Google Play or Amazon App Store and search for "HEOS" to download and install.



- 2 Launch the HEOS App and follow the instructions in the app to complete the setup and configuration of the DHT-S716H.



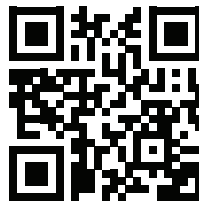
STEP 5: ADD DEVICE



ENJOY!

OWNER'S MANUAL

- For more information, visit www.denon.com
- Refer to the Online Manual for other functions information and operation procedure details.
manuals.denon.com/DHTS716H/EU/EN/



BASIC TROUBLESHOOTING

My HEOS device won't connect to my network using the audio cable

- Make sure your mobile device is connected to your wireless network before setting up your HEOS device.
- Alternatively, you can connect your HEOS device to your network router using the included Ethernet cable. Once connected via Ethernet, the HEOS by Denon App should recognize the HEOS device and you can manually move it to your wireless network using *Settings/My Devices/Device_Name/Advanced/Network Settings*.

Music cuts out or delays sometimes

- Make sure your Internet connection is operating correctly.
- If you are sharing your network with other users or devices, they may be using most of your bandwidth (especially if they are streaming video).
- Make sure your HEOS devices are within range of your wireless network.
- Make sure your HEOS devices are not located near other electronic devices that could interfere with its wireless connectivity (like microwave ovens, cordless phones, TVs, etc...).

Cannot pair a Bluetooth device with the HEOS device

1. Activate the Bluetooth setting on your mobile device.
2. Press and hold the Play/Pause button located on the remote control unit for 3 seconds and release the button when you see a pattern of two green flashes on the status LED.
3. Select "Denon DHT-S716H" from the list of available Bluetooth devices.

Connecting to a network using WPS

If your wireless router supports WPS (Wi-Fi Protected Setup™) your HEOS wireless device can optionally connect to your network using the "Push Button" method by following these steps:

1. Press the WPS button on your router.
2. Within 2 minutes, Press and Hold the Connect button on the rear panel of the HEOS device for 5 seconds.
3. The LED on the front of the HEOS device will flash green for several seconds as it connects to your router.
4. When the connection is complete, the LED on the front of the HEOS device will turn solid blue.

Resetting your device

Resetting your HEOS device will clear out the wireless network settings, EQ, and name but retain it's current software. You will have to use Settings->Add Device to reconnect the device to your home network before it can be used.

To reset your HEOS device, press and hold the Connect and Bluetooth buttons located on the HEOS device for 5 seconds until the front LED begins to flash amber.

The HEOS by Denon app and brand is not affiliated with any manufacturer of any mobile device.

HEOS and the HEOS logo are trademarks or registered trademarks in the US and/or other countries.

Apple and the Apple logo are trademarks of Apple Inc., registered in the U.S. and other countries. App Store is a service mark of Apple Inc.

Google Play is a trademark of Google Inc.

Amazon, Kindle, Fire and all related logos are trademarks of Amazon.com, Inc. or its affiliates.

Wi-Fi Protected Setup™ logo is trademark of Wi-Fi Alliance.

The Bluetooth® word mark and logos are registered trademarks owned by the Bluetooth SIG, Inc. and any use of such marks by D&M Holdings Inc. is under license. Other trademarks and trade names are those of their respective owners.

All other trademarks are the property of their respective owners.

CONTACT Denon

 00800-43674357

EN

FREE HELPLINE

We hope you will enjoy your HEOS enabled product for years to come. If you ever have any questions or need any support, just get in touch. We are happy if you are happy.

The free HEOS helpline (English) is currently available in the United Kingdom, Ireland, Sweden, Norway, Denmark and Finland.

For more information visit www.denon.eu/support

ES

TELÉFONO GRATUITO DE AYUDA (DISPONIBLE EN ESPAÑA)

Encontrarás las respuestas a las preguntas más frecuentes y más información en www.denon.eu/support

NL

GRATIS HULPLIJN

We hopen dat u nog jaren plezier zult hebben van uw met HEOS uitgeruste product. Als u vragen heeft of ondersteuning nodig heeft, neem dan gewoon contact op. Als jij blij bent, zijn wij dat ook.

Hulplijn is beschikbaar in Nederland, België en Luxemburg.

Meer informatie is te vinden op www.denon.eu/support

PL

BEZPŁATNA INFOLINIA (DOSTĘPNA W POLSKA)

Odpowiedzi na najczęściej zadawane pytania i bardziej przydatne informacje można znaleźć pod adresem www.denon.eu/support

DE

KOSTENFREIER SUPPORT

Wir hoffen, dass Sie mit Ihrem neuen HEOS fähigen Produkt lange Freude haben werden. Falls Sie zu irgendeinem Zeitpunkt Fragen haben oder Unterstützung benötigen, zögern Sie nicht, uns zu kontaktieren.

Die kostenfreie Rufnummer für den deutschsprachigen Support steht Ihnen in Deutschland, Österreich und der Schweiz zur Verfügung.

Weitere Informationen erhalten Sie unter www.denon.eu/support

OTHER REGIONS / AUTRES PAYS

For support options in other countries than those mentioned above, please visit www.denon.eu and choose your country.

Pour connaître les options de support dans d'autres pays, par avance merci de vous connecter dans notre site www.denon.eu puis sélectionner votre pays.

English

Français

Español

Deutsch

Nederlands

Italiano

Svenska

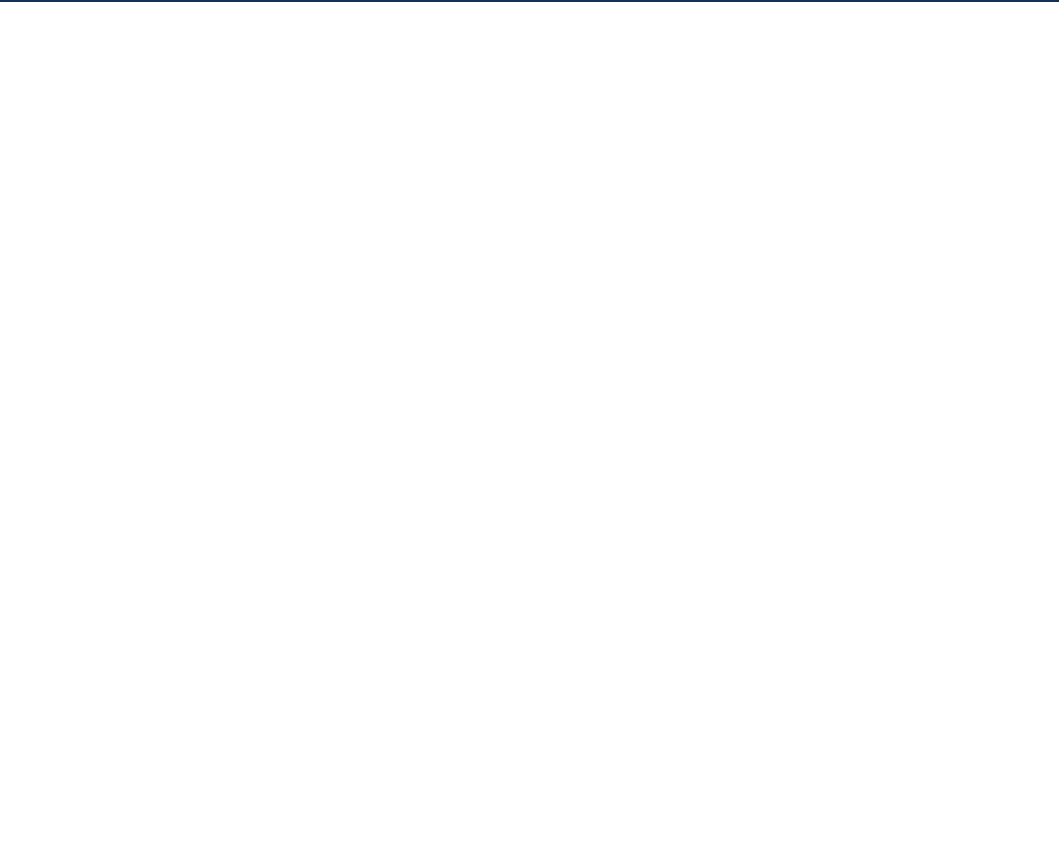
Dansk

Norsk

Русский

Polski

Common



DENON[®]

www.denon.com

Printed in China 5411 11778 00AD
Copyright ©2019 D&M Holdings Inc. All Rights Reserved.