

RDA10

DANTE-ENABLED 6.25" COAXIAL CEILING LOUDSPEAKER



The RDA10 is a cost-effective full-frequency 6.25-inch coaxial ceiling loudspeaker with a Class D digital audio amplifier that delivers up to 30W of power. It has built-in full-band coaxial ceiling loudspeakers that are easy and quick to install using standard bend clips. With its bezel free structure and exquisite slim design, it can be cleverly integrated into the ceiling environment, making it an ideal choice for hotels, conference rooms, shopping malls, educational institutions, hospitals, retail stores, performing arts centers, restaurants, airports, chapels and board rooms.

RDA20

DANTE AUDIO NETWORKED ENABLED SPEAKER



The RDA20 is an integrated active full frequency speaker with network transmission and pure digital power amplifier. The speaker is powered by PoE/PoE+ network switch meaning no external power supply is required. The speaker includes a Class D amplifier which provides. Connect a network cable to communicate with the built-in Dante module to realize network audio signal transmission. By automatically assigning an IP address through the router DHCP, it can transmit signals with Dante's audio matrix in the LAN, and it is easy to set up a full digital network sound reinforcement system. Suitable for education, hospitals, small and medium-sized conference rooms, restaurants, houses of worship and other places.

Key Features

DSP Audio Digital Extension

- The high-speed DSP chip and self-developed digital audio extension algorithm are used to reduce the noise caused by audio transmission.

Quick Installation

- It can be installed easily and quickly by using standard bending clamp. The shape adopts a frameless structure and exquisite thin design, which can be cleverly integrated into the ceiling environment, making it a hotel, conference room, shopping center, educational institution, hospital, retail store, performing arts center and other places.

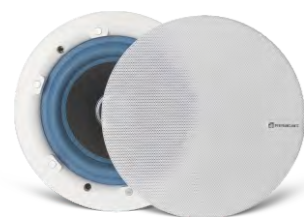
PoE Power Supply

- The latest standard specification for the simultaneous transmission of DATA and electrical power using existing standard Ethernet transmission cables while maintaining compatibility with existing Ethernet systems and users.

Dante Network Audio Protocol

- Built-in Dante module communication to achieve network audio signal transmission. The IP address can be automatically assigned through DHCP router, and the signal can be transmitted with Dante audio matrix in the LAN, and a set of digital network sound reinforcement system can be easily established.

Product Specification



RDA10
Dante-Enabled 6.25"
Coaxial Ceiling Loudspeaker

Power Supply:	Standard PoE/PoE+
Power Supply Voltage:	37V-57V
Input Mode:	Dante input
Output Power:	PoE 10W/PoE+ 20W
Frequency Response (-3dB) :	90Hz-16KHz
Sensitivity:	90dB
Sound Pressure Level Output (-6dB) :	110dB/RMS, 113dB/peak
Coverage Angle:	Horizontal 90° /vertical 90°
Socket:	RJ45 JACK
Installation Opening Size(mm):	Φ190
Size(mm):	210(W)×150(D)
Weight:	About 1.8kg

Key Features

Functional Diversification

- It has perfect protection functions (short circuit protection, overcurrent protection, over and under protection, DC protection, overheating protection, power voltage limit, clipping limiter), high efficiency and high sound energy output, excellent sound quality, perfect protection functions and good electromagnetic compatibility characteristics

Dante Network Mode

- Full frequency speaker integrating network transmission and pure digital power amplifier

PoE Power Supply

- The latest standard specification for the simultaneous transmission of DATA and electrical power using existing standard Ethernet transmission cables while maintaining compatibility with existing Ethernet systems and users.

Intelligent IP Allocation

- Automatically assign IP addresses through router DHCP

XLR XLR Socket

- XLR RJ45 socket

Product Specification



RDA20
Dante Audio Networked
Enabled Speaker

Power Supply:	Standard PoE / PoE +
Power Supply Voltage:	37V-57V
Input Mode:	Dante input
Output Power:	PoE 10W / PoE + 20W
Frequency Response (-3dB):	85Hz-17KHz
Sound Pressure Level Output (-6dB):	110dB / aes continuous; 113dB / peak
Coverage Angle:	Horizontal / vertical 90° / 90°
Input jack:	RJ45
Size(mm):	132(W)×160(D)×236(H)
Weight:	About 2.93kg
Accessories:	Wall bracket