

**AVMATRIX**<sup>®</sup>

# 4K HDMI REAL-TIME CHROMA KEY MASTER

4K Chroma Keying for Pro Live Production.



**KM32-4K**

Model No.:



### 3 × 4K HDMI Inputs



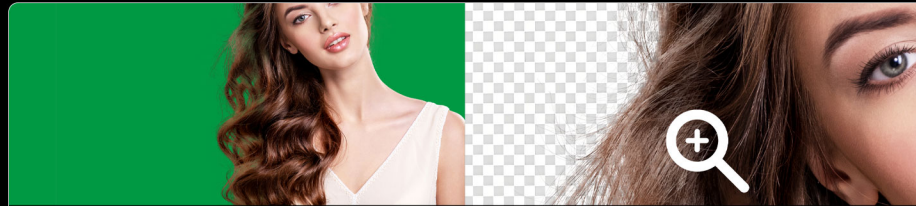
### 4 × 4K HDMI Outputs



### DSK & PIP Overlay



### DC & POE Power Supply



### Auto & Manual Chroma Key

### Flexible Control Options



### External Audio & Tally Input



# Your Complete I/O Keying Solution

## 3-CH 4K HDMI Input, Multi Out

This advanced chroma keyer features three 4K HDMI inputs, supporting Foreground (FG), Background (BG), and DSK for flexible and precise chroma key setup. It delivers high-quality 4K HDMI Program Output (PGM), along with Matte Out, Clean Out, and Auxiliary (AUX) outputs, ensuring seamless signal switching to meet diverse production needs.





# Unmatched Clarity, Professional Results

## 4K Ultra HD Keying & Compositing

Supports up to 4K60 resolution and ensures the transmission of ultra-high-definition picture quality, providing users with the ultimate visual experience.



# Smart & Effortless Keying

Auto & Manual Dual Modes

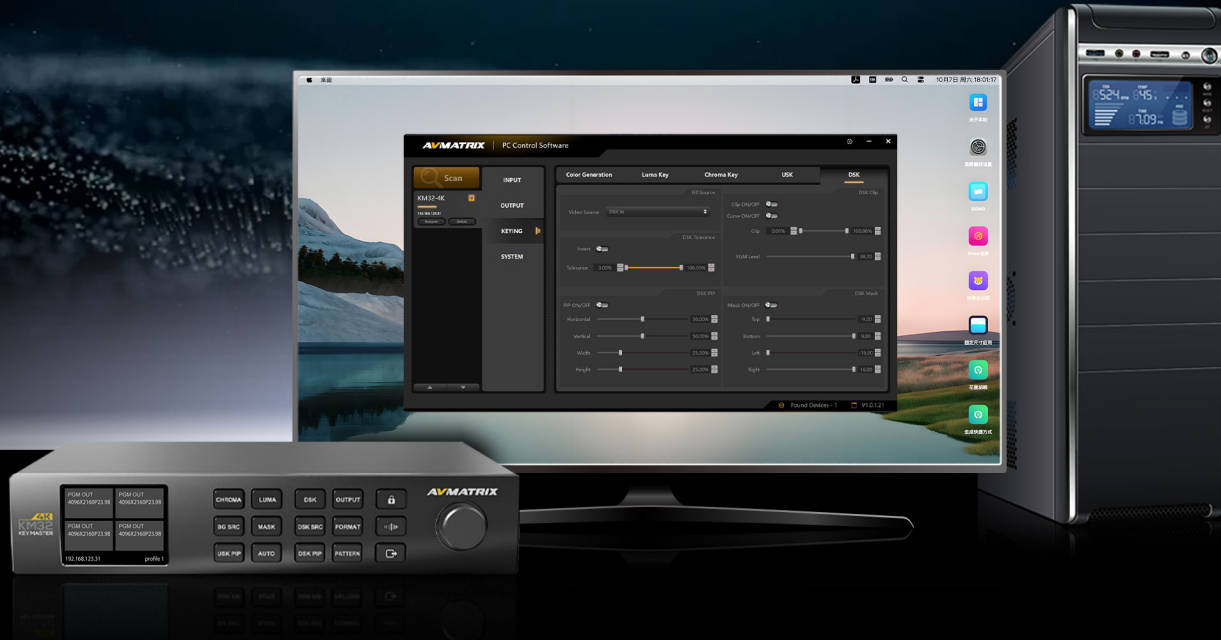
Powered by advanced algorithms, this Chroma Keyer offers the ultimate keying experience. It effortlessly handles both green and blue screens, providing both auto and manual chroma keying options. One-touch auto keying delivers fast, accurate background removal. Manual edge tuning lets you refine details for smooth, natural, professional results.



# Convenient Control

## Front-panel & PC Software Control

Supports front-panel button control and PC software control, catering to different operating preferences. Features an intuitive and user-friendly interface. Suitable for live events, remote production, and more.



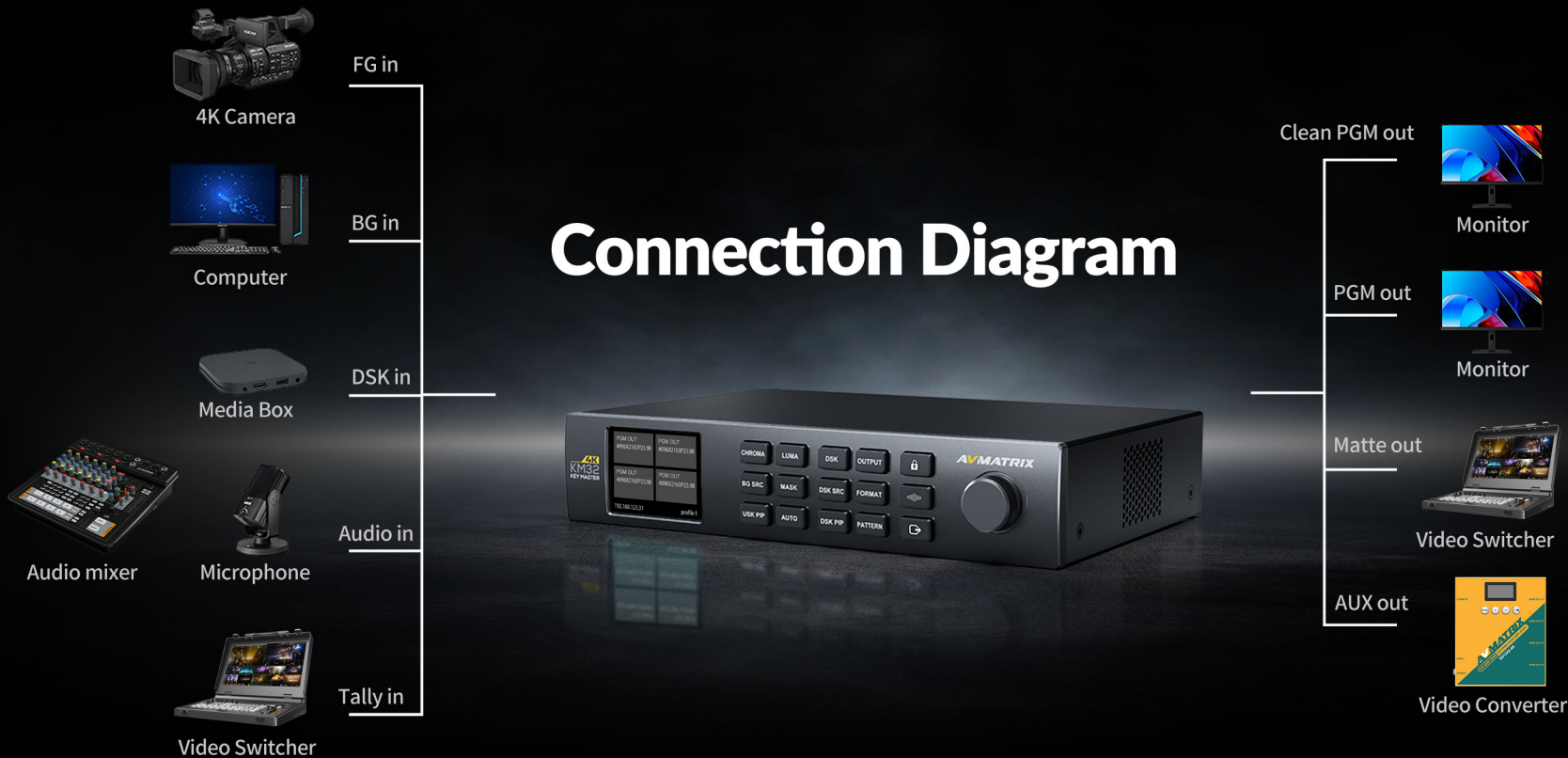


# Dual Power Options

PoE & DC Power Supply

Support both Power over Ethernet (PoE) and traditional DC power supply. This dual capability empowers users with flexibility and convenience, allowing users to choose the most suitable power source based on their specific requirements.

# Connection Diagram





## Live Audio, Live Status

### Audio Embedding & Real-Time Tally

The HDMI chroma keyer features a dedicated audio input for embedding external audio into the PGM output. It also supports a Tally input, clearly indicating the on-air signal status in real time, enabling precise control and improved production efficiency.

# Specifications

## CONNECT

Video Input	3×HDMI Type A (DSK In, BG In, FG In)
Video Output	4×HDMI Type A (PGM Out, Mask Out, Clean Out, AUX Out)
Audio Input	3.5mm Line In ×1
Tally Input	3 PIN Tally ×1
LAN	LAN ×1 (Control Software, PoE Power Supply, Firmware Upgrade)
Power Supply	DC 12V ×1
Display	Built-in 2.2-inch display

## STANDARD

HDMI Input Formats	(4K) 4096x2160p 60/59.94/50/30/29.97/25/24/23.98
	(4K) 3840x2160p 60/59.94/50/30/29.97/25/24/23.98
	(HD) 1920x1080p 60/59.94/50/30/29.97/25/24/23.98
	(HD) 1920x1080i 60/59.94/50
HDMI Output Formats	(HD) 1280x720p 60/59.94/50/30/29.97/25/24/23.98
	(4K) 4960x2160p60/59.94/50/30/29.97/25/24/23.98
	(4K) 3840x2160p60/59.94/50/30/29.97/25/24/23.98
	(HD) 1920x1080p60/59.94/50/30/29.97/25/24/23.98
	(HD) 1920x1080i60/50
	(HD) 1280x720p60/50

Color Space	REC601, REC709, REC2020
Video Sampling	4:2:2
Color Precision	10bit

## FUNCTION

Key	Upstream Key: Luma Key ×1 / Chroma Key ×1 / USK PIP ×1
	Downstream Key: DSK ×1 / DSK PIP ×1
Audio	FG HDMI in ×1, Line ×1
Media Library	Pattern Key, PATTEN ×1
Power	Power Wide Voltage: 7~24V; Power: 16.8W (12V 1.4A)

## OTHER

Dimension (LWD)	220×141.3×44mm
Weight	Net Weight: 1115g, Gross Weight: 1630g
Temperature	Operating: -20~60℃, Storage: -30~70℃
Warranty	2 years



## Accessories

