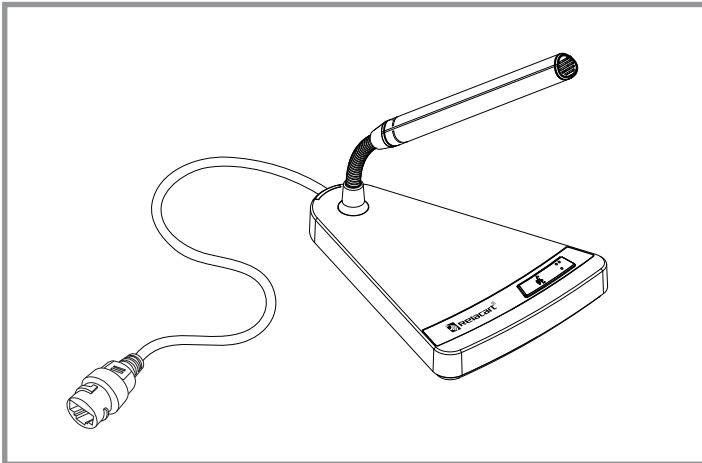


Condenser cardioid conference microphone with Dante



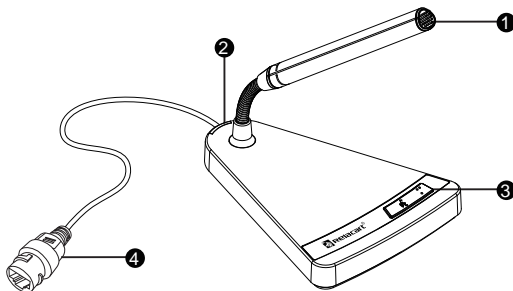
TDN3 is a Dante network desktop conference microphone. The tube body adopts a small triangular gooseneck design structure and is matched with a high-quality condenser pickup. The pickup head can be easily and flexibly adjusted to any position, and effectively picks up the sound in front of the microphone and uses the microphone structure to suppress the sensitivity of the sides and ends to enhance the speaker's voice and reduce the interference of ambient noise.

The exquisite triangle base is made of durable alloy casting, strong and artistic, and the base is equipped with a mute switch and working indicator light.

To connect Relacart TDM digital control software by a Cat5 network cable to enable the microphone to have IP address visualization and customize the microphone's low cut, EQ, light color and volume.

The above settings can be copied directly from certain microphone to another through the software. Unique troubleshooting function, when press the CALL button the LED light of the microphone will flash, and the position of the microphone can be quickly found.

Function Introduction

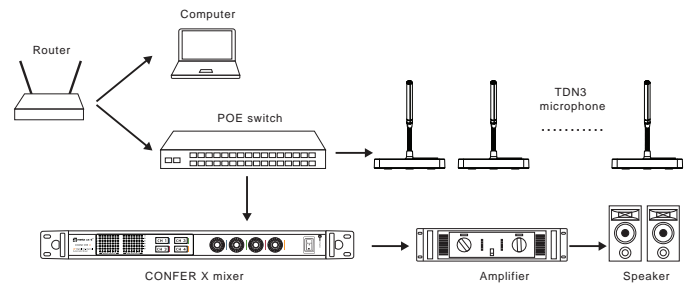


- 1 Pickup head: High-quality condenser microphone provides clear and full sound quality, high sensitivity, and good long-distance pickup effect.
- 2 Working status indicator: Red light when mute, green light when speaking (default color).
- 3 Light touch main switch: With LED indicator, the color of indicator can be changed by TDM software.
- 4 RJ45 Network cable interface: Connects to the POE switch, provides POE power for the microphone, and acts as a Dante audio data connection port and network data communication to adjust the microphone parameters.

Specifications

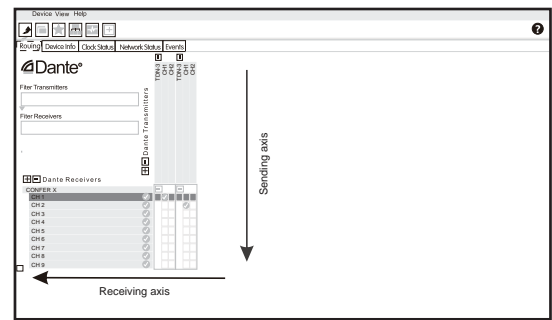
Frequency Response: 20Hz ~ 20KHz
Gain adjustment: 6-level gain adjustable
Low Cut: 150Hz, 18dB/Octave (Removal frequency can be modified by software)
Signal-to-noise ratio: 66dB, 1KHz at 1Pa
PoE Standard: IEEE802.3af standard
Output interface: RJ45 network port
DANTE network: RJ45 connector, above 100Mbps, above CAT5 or CAT6
Indicator light: LED multi-color adjustable status indicator
Equalizer: 4-band parametric equalizer, set by control software
Power consumption: 2.3W
Dimension (mm): 148 (L) x 115 (W) x 233 (H)
Weight: About 670g

Connection Diagram of Dante Conference System



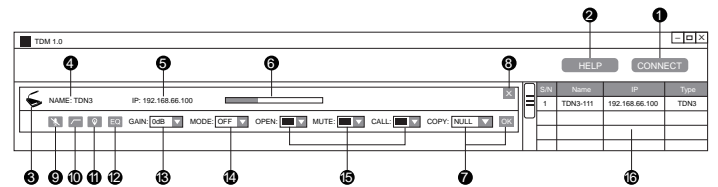
Dante technology allows you to send and receive multiple audio channels on an ethernet line at the same time. Please contact our engineers for more connection solutions.

Dante Software Diagramed



Note: Dante cannot operate in Wi-Fi connected environment. We rely on reliable and secure wired network environments to transmit perfect audio

TDM Software Diagramed



- 1 CONNECT: Click this button to display the gray "CONNECT" in white, which means that the microphone in the LAN will be searched automatically and connected automatically.
- 2 HELP: Click to enter the software application guide.
- 3 Microphone product profile: Shows the profile of the currently connected microphone.
- 4 NAME: Displays the name of the currently connected microphone.
- 5 IP: Displays the IP address of the current microphone.
- 6 Level signal display: Can visually display the size of the level signal.
- 7 COPY: Click the drop-down menu to select the microphone with set parameters, and then click "OK" to copy the set parameters to the current microphone. (Note: Only the same model of microphone can be copied)
- 8 Close the microphone function window button.
- 9 Mute switch: One button on/off mute.
- 10 Low cut switch: After pressing this switch, the software can intelligently filter the low frequency noise in the environment picked up by the microphone.
- 11 Positioning switch: After pressing this switch, the corresponding microphone LED will flash. You can quickly find the position of the microphone according to the flashing LED light.
- 12 EQ Switch: Click the icon to pop up EQ interface, four-section parameter equalization, frequency, gain, Q value can be customized.
- 13 GAIN: Gain adjustment button, there are 6 levels of gain adjustable (+15dB / +12dB / +9dB / +6dB / +3dB / 0dB). "0" is the default gear, at this time the gain is off, when the switch is set to "+15dB / +12dB / +9dB / +6dB / +3dB" any gear, to increase the pickup sensitivity.
- 14 MODE: Microphone mode, a total of 4 modes (ON / OFF / PTT / PTM).
ON: At the beginning of power on, the LED light is green, and the light touch switch is mute, and the LED light is red;
OFF: When powered on, the initial mute, LED red, touch the switch to speak, LED light green;
PTT: At the beginning of power on, the LED light is mute, and the LED light is red. Long press the switch to speak, and the LED light is green.
PTM: When the power is on, the LED light is green. When the switch is long pressed, it will be mute and the LED light will be red.
Above is the light display in the default state.
- 15 LED color setting: You can customize the LED color of the microphone in various states.
- 16 Microphone list: Shows the number, name, model and IP address of microphones searched. Double-click the selected microphone to open the features page on the left.